

ARTS | CULTURE | HERITAGE

PCCHC

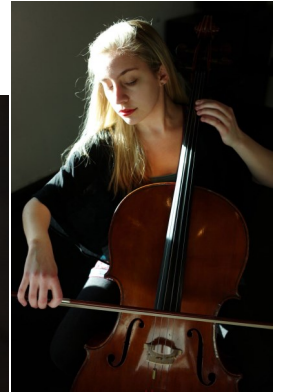
SUPPORT | ENRICH | CELEBRATE



PASSAIC COUNTY CULTURAL & HERITAGE COUNCIL AT PASSAIC COUNTY COMMUNITY COLLEGE

St. Timothy Musicales Concert Series

St. Timothy Musicales, a series of concerts at St. Timothy Lutheran Church, 395 Valley Road, Wayne, takes place at noon on the following Wednesdays: **October 11**, Quatrain, award-winning barbershop quartet; **October 18**, cellist Emma Schmiedecke and pianist Linda Sweetman-Waters; **October 25**, harpist Karen Stern. The programs are free, and individuals and groups are welcome. Indoor elevator for excellent disability access. For details, contact: anneloff@optonline.net or 973-956-0026.



Garden State Opera Presents...

The Marriage Counselor, for Clifton's Centennial Celebration at Allwood Community Church, 114 Chelsea Rd., Clifton, **Fri., Oct. 6, 8 PM** (\$10 donation); and Mozart's *Bastian and Bastienne* with the choir students from the Rosa L. Parks High School of Fine & Performing Arts, on **Oct. 3, 7 PM**, 413 12th Ave., Paterson. For more info, visit <http://www.paterson.k12.nj.us/schools/rphs/>.

Underground Railroad Exhibit

Frederick Douglass & the Underground Railroad Exhibit by Mark Priest is at the American Labor Museum **through April 21, 2018**. The Museum is located at 83 Norwood St., Haledon. For more information, visit www.labormuseum.net or call 973-595-7953.



Eco-Art Installation at Paterson Museum

Paterson Eco-Chic will be exhibited at the Paterson Museum **through January 31**. Weaving the Silk City's textile industry past with its future, the curator, **Cristina Deutsch**, showcases fifteen wearable art pieces produced by Bergen County Academies students, guest artists, and guest designers. The garments are made of recyclable materials donated by Paterson manufacturing companies. **Opening reception and fashion show, Sunday, Sept. 17 at 1 PM**. For more info, contact: cdeutsch@patersonnj.gov or (973) 321-1260.

Harvest Festival at Lambert Castle

On **Saturday, October 14, from 3 to 6 PM**, children can come to Lambert Castle to participate in fall crafts and games, learn about local historic sites, drill with Revolutionary war soldiers, and maybe even meet the Headless Horseman in person! The festival concludes with Washington Irving's classic story and Halloween songs. Recommended for children ages 3 to 12 years, the event will take place on the North Lawn of the Castle (home of the Passaic County Historical Society) at 3 Valley Road, Paterson. Free; donations requested. Bring your own blankets/lawn chairs. No rain date.



Stained Glass Art Exhibit

In celebration of Clifton's 100th anniversary, the Clifton Arts Center is presenting *Clifton's Glass Artists: The Stained Glass Art of Hiemer & Company*. The exhibit runs **through Dec. 9.**, with a reception open to the public on **Thurs., Sept. 28, 4 to 8 PM**. Gallery hours are Wednesdays to Saturdays, 1 to 4 PM. Group tours available by appointment. Admission \$3. For more info visit: www.cliftonnj.org.



Wayne Public Library Presents...

Wed., October 4 Peter Biedermann, Solo Acoustic Guitar, Lunchbox Learning, **12:30 PM**.

Sun., October 8, Meta-Land Poets of the Palisades II, **2:00 PM**.

Wed., October 11, Dan Rose, Milton Hershey: The Man Who Reinvented Chocolate, Lunchbox Learning, **12:30 PM**.

Wed., October 25, Richard Burnon, Army Cover-Up: The Mysterious Death of Brigadier General Enoch Poor, Revolutionary War Hero, Lunchbox Learning, **12:30 PM**.

RMAA Fall Open Juried Exhibition

Ringwood Manor Association of the Arts 52nd Annual Fall Open Juried Exhibition will take place **September 27 to October 25** at the Barn Gallery of Ringwood State Park. Gallery hours are 1 to 4 PM on Wednesday, Saturday and Sunday. For more information about the exhibition, visit RingwoodManorArts.org.

On **October 1**, the Ringwood Manor will offer two exclusive group tours at **10:00 AM and 1:30 PM** by the Manor curator and historian, Sue Shutte. The tours will focus on the site's Cooper-Hewitt art collection, including paintings by: 19th-century Hudson River School founder, Thomas Cole; American landscape artist, Jasper Cropsey; and landscape and still life artist Martin Johnson Heade. Tour cost is \$20 with all proceeds supporting the RMAA Fund. Tours limited to 20 people each session; advance payment required. Call 973-839-0921 or visit RingwoodManorArts.org.

Student BLOCK Print Exhibit at PCCC

Transferring design, carving out blocks and using ink rollers to the backside of recycled wall paper, students have created a world unlike any other. The Graphic Design & Fine Arts Club Block Print Exhibit is at Passaic County Community College's Broadway Gallery (at Memorial Dr.) from **Sept. 18 to Nov. 18**.

Reception: September 28, 3 to 5 PM.



WWI Exhibit & Lecture Series

For Home and Country: World War I Posters from the Newark Public Library will be on display at William Paterson University (WPU) **through Dec. 13**. Curated by WPU Professor of History, George Robb, the exhibit showcases over 20 propaganda posters and commemorates the U.S. World War I Centennial. A lecture series will be offered in the WPU South Galleries, 11am - noon, 300 Pompton Rd., Wayne. Talks include: *Artists at War* by Professor Robb, **Oct. 4**; *About Design* by Dean Daryl J. Moore, **Oct. 16**; and *The Great War Through Women's Eyes* by Michelle Moravec, **Nov. 13**. For more info, contact Emily Johnsen, (973) 720-2654. Poster at left by Alfred Everitt Orr, 1918, Color lithograph (30" x 20"), courtesy of the Special Collections Division, Newark Public Library.

These programs are made possible, in part, by the Passaic County Cultural & Heritage Council from funds granted by the NJ State Council on the Arts and the NJ Historical Commission