

# Lunch and Learn December 8, 2016

Nancy Silvestro

Dawn Norman



# Guided Pathways

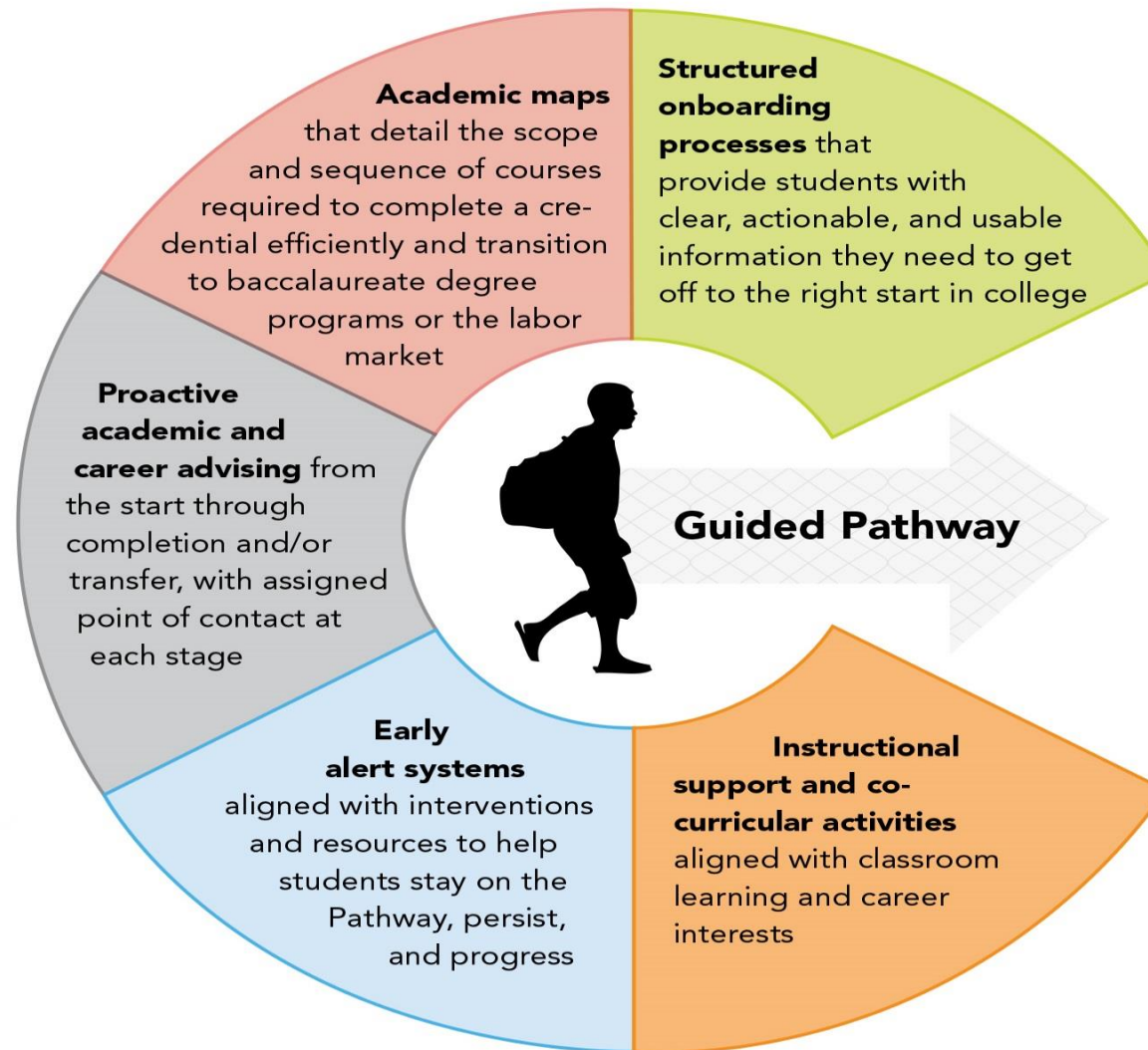
National Movement that engages colleges in the systematic redesign of their academic programs and support services to provide students with clear roadmaps and support from entry to completion.

# A Comprehensive Approach

- I. Academic Program Structure
- II. New Student Intake
- III. Instruction
- IV. Progress Monitoring & Support

*Guided Pathways* refers to broad categories of majors that are accompanied by targeted support services and interventions to keep students on track toward graduation, transfer and/or attainment of career credentials.

(Source: Completion by Design)



# Loss/Momentum Framework

CONNECTION	ENTRY	PROGRESSION	TRANSITION
Interest to Application	Application to Completion of COL 103	Completion of COL 103 to completion of required coursework	Completion of program of study to credential with labor market value and/or transfer

# Challenges: The Need for Guided Pathways

- **Hidden prerequisites**
- **Too many course options**
- **Lack of understanding of career options and credentials**  
= Students need to begin with the end in sight.
- **Underprepared students**
- **Limited-access programs**
- **Financial aid restrictions**

# Proposed Pathways Model

- **Mandatory new student orientation**
- **Mandatory COL 103 in 1<sup>st</sup> semester:** Intensive career information; select a major or pathway; create a 2-year plan using Student Planning Module
- **Two-semester common course sequence**
- **Career and academic pathway workshops – required**
- **Proactive advisement at specified points of connection**

# Pathways At a Glance

**Business:** Business Administration, Accounting

**Creative Arts:** Culinary Arts, Digital Media Production and Distribution  
Graphic Design, Music Technology

**Education:** Early Childhood Education, Teacher Education

**Helping Professions:** American Sign Language, Criminal Justice, Fire  
Science, Homeland Security, Human Services

**Healthcare:** Nursing, Radiography, Health Information Technology,  
Occupational Therapy

**Humanities & Social Sciences:** English, Psychology, Sociology

**STEM**

**Trades:** Technical Studies, Plumbing, Welding



# Pathways students will...

- **Begin planning with their end goal in mind.**
- **Receive career information and planning based on current workforce needs**
- **More easily transfer to 4-year institutions.**
- **Be able to explore careers and change majors within a pathway without losing credits.**
- **Be less likely to accumulate excess credits.**
- **Participate in meaningful advisement sessions with faculty at specific points (not for registration).**
- **Benefit from proactive advisement and early interventions based on a more effective early alert system.**

# Next Steps

- Implement mandatory online new student orientation.
- Integrate the Student Planning Module in COL 103.
- Provide professional development related to career software and the student planning module.
- Examine articulation agreements and career credentials.
- Identify common course sequences and points of connection in each pathway.
- Eliminate hidden prerequisites.
- Reduce course choices in programs and pathways.
- Design an advisement model that involves collaboration between faculty and student support services.
- Identify a more effective early alert system.
- Design interventions for pre-probation, probation and other at-risk students.

# Sample Maps

- Arizona State University:
  - Business Semester Map: <https://webapp4.asu.edu/programs/t5/roadmaps/ASU00/BABUSBA/null/ALL/2016>
- Community College of Philadelphia:
  - Accounting Career information : <http://www.ccp.edu/academic-offerings/all-offerings/business-and-technology/degree-programs/accounting>
  - Accounting Semester Map: <http://www.ccp.edu/college-catalog/degree-and-certificate-programs/associate-applied-science-aas/accounting>
- Mott Community College:
  - Accounting Interest Survey: [http://www.mcc.edu/career\\_pathways/cp\\_business.shtml](http://www.mcc.edu/career_pathways/cp_business.shtml)
  - Accounting Degree Pathway: [http://www.mcc.edu/business/bus\\_accounting-gp.shtml](http://www.mcc.edu/business/bus_accounting-gp.shtml)
  - Transfer Information: <http://www.mcc.edu/transfer/index.shtml>

# Resources

For online resources, literature and information about Guided Pathways, visit



on the PCCC home page

OR

contact Dawn Norman or Nancy Silvestro